

Ethernet Switches Unmanaged

Electronics
for Rolling Stock
and Public Transport

M12
RJ45

RB-SW..

RD-SW..



- 6 and 24 ports Ethernet switches
10 / 100 Mbps / 1 Gbps
- PoE version available
- Robust vibration-proof
connections with M12
- Versions with RJ45
- Wide operating
temperature range
-40 °C to 70 °C
- EN 50155 compliant

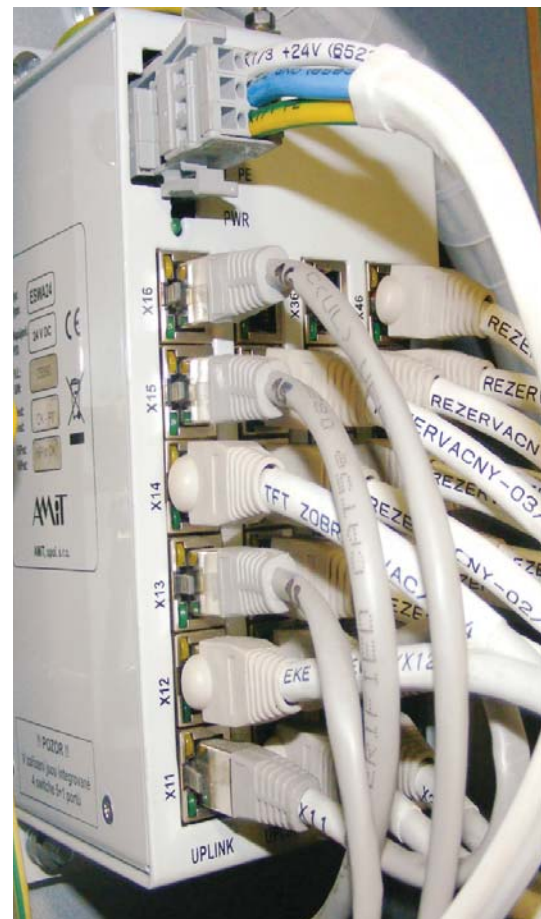
Ethernet switches with M12



RB-SW006/AM1

RB-SW006/NM1

Number of ports	5 + 1	5 + 1
Ports with PoE	5	-
Ports without PoE	1	5 + 1
10 / 100 / 1000 Mbps	-	
10 / 100 Mbps	5	
100 Mbps	1	
Connectors	M12, D-coded	
Power supply	16,8 V to 33,6 V DC	9 V to 33,6 V DC
Power consumption	Max. 2,2 A at 24 V DC	Max. 0,2 A at 24 V DC
Cover protection rate	IP20	
Operating temperature range	-40 °C to 70 °C	
Mounting	4 × ø 6 mm hole	2 × ø 6 mm hole
Weight	1,20 kg	0,87 kg
Dimensions (w × h × d)	(74 × 180 × 121) mm	(33 × 234 × 99) mm
Standards	EN 50155, EN 50121-3-2, EN 61373, EN 60068-2-1, EN 60068-2-2	



Ethernet switches with RJ45



RD-SW006/AR1

RB-SW006/NR1

RB-SW00A/NR1

Number of ports	5 + 1	5 + 1	4 × (5 + 1)
Ports with PoE	5	-	-
Ports without PoE	1	5 + 1	4 × (5 + 1)
10 / 100 Mbps	5		4 × 5
100 Mbps	1		4 × 1
Connectors	RJ45		
Power supply	16,8 V to 33,6 V DC	9 V to 33,6 V DC	16,8 V to 33,6 V DC
Power consumption	Max. 2,2 A at 24 V DC	Max. 0,2 A at 24 V DC	Max. 0,6 A at 24 V DC
Cover protection rate	IP20		
Operating temperature range	-40 °C to 70 °C		
Mounting	35 mm DIN rail	2 × ø 6 mm hole	4 × ø 6 mm hole
Weight	1,02 kg	0,70 kg	1,30 kg
Dimensions (w × h × d)	(65 × 124 × 126) mm	(33 × 193 × 88) mm	(92 × 193 × 88) mm
Standards	EN 50155, EN 50121-3-2, EN 61373, EN 60068-2-1, EN 60068-2-2		

Rugged and temperature-durable switches for rolling stock applications.

AMiT, spol. s r.o.
Naskové 3/1100, 150 00 Prague
Czech Republic

phone: +420 222 781 516
+420 222 780 100
fax: +420 222 782 297

e-mail: transportation@amit.cz
www.amit-transportation.com

www.amit-transportation.com

